

Name \_\_\_\_\_

# MATH in Minutes

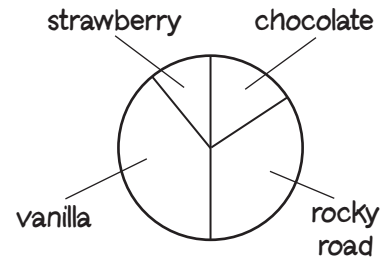
## Level B

#3

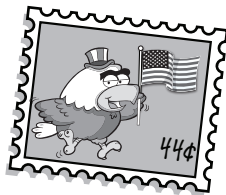
1. Students at Lewis School are selling tickets to the talent show for \$5 each. They have collected \$1,965. Have the students sold more than or less than 390 tickets? How do you know?  
**Number and Operations**



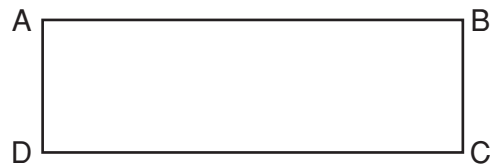
4. Use the circle graph to estimate the percentage of students who prefer each ice cream flavor. Explain your answers. **Data Analysis and Probability**



2. Troy mailed 125 letters. Together, a stamp and envelope cost \$0.48. Troy's mom gave him \$50. Did he need to use some of his own money to buy supplies? Explain how you know. **Number and Operations**



5. In the rectangle ABCD, which sides are parallel and which are perpendicular? How do you know?  
**Geometry**



3. Arrange the digits 2, 3, 6, and 7 so the tenths digit is twice the hundredths digit, three times the tens digit, and one less than the ones digit. How do you know you're correct? **Number and Operations**

\_\_\_ . \_\_\_

6. Explain what is wrong with this recipe. **Measurement**

2 quarts lemonade	8 quarts fruit punch
2 quarts cranberry juice	
4 quarts ginger ale	
Makes 3 gallons.	